

# Unable to connect to wireless networks after standby.

By Jesper Rønn-Jensen, Capgemini 2007-07-25

Big issue with our lenovo laptops. Lenovo T60p (widescreen), encounters a problem with the wireless network.

**After standby, the computer can't find my wireless network.** It almost will never connect after a system standby.

Here is a workaround other than having to restart computer:

**Step #1** Plug in your power adapter and restart your computer. (optional)

**Step #2** In Microsoft Windows

Click on Start



Right-click on My Computer

Click on Properties



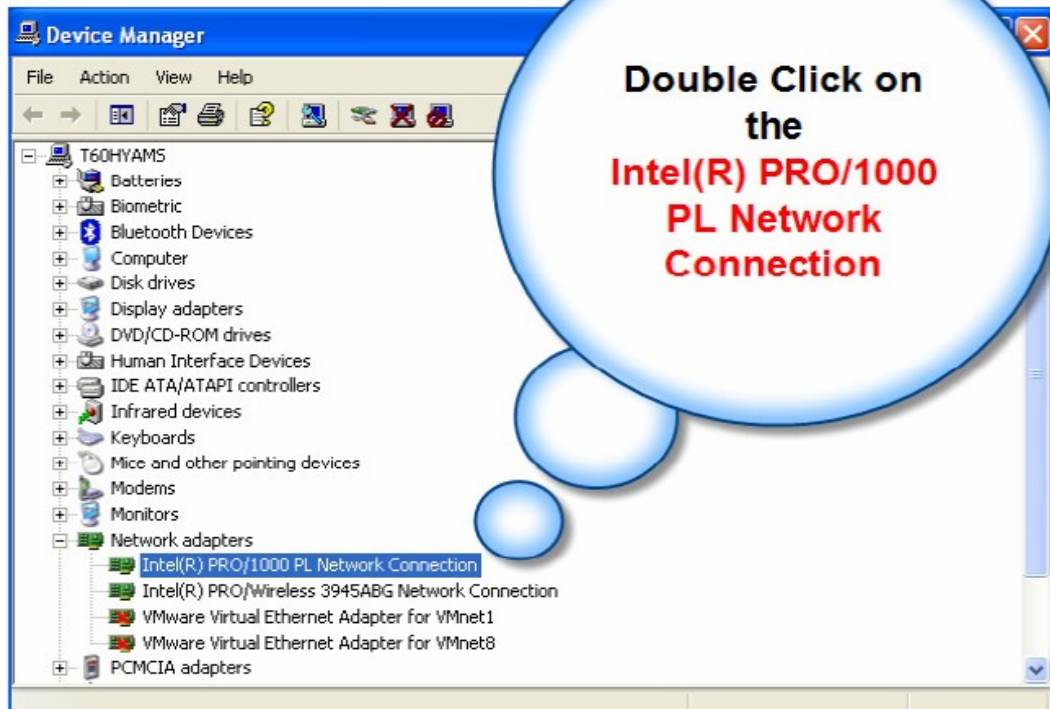
**Step #3** In System Properties Click the Hardware Tab



**Step #4** Click on Device Manager

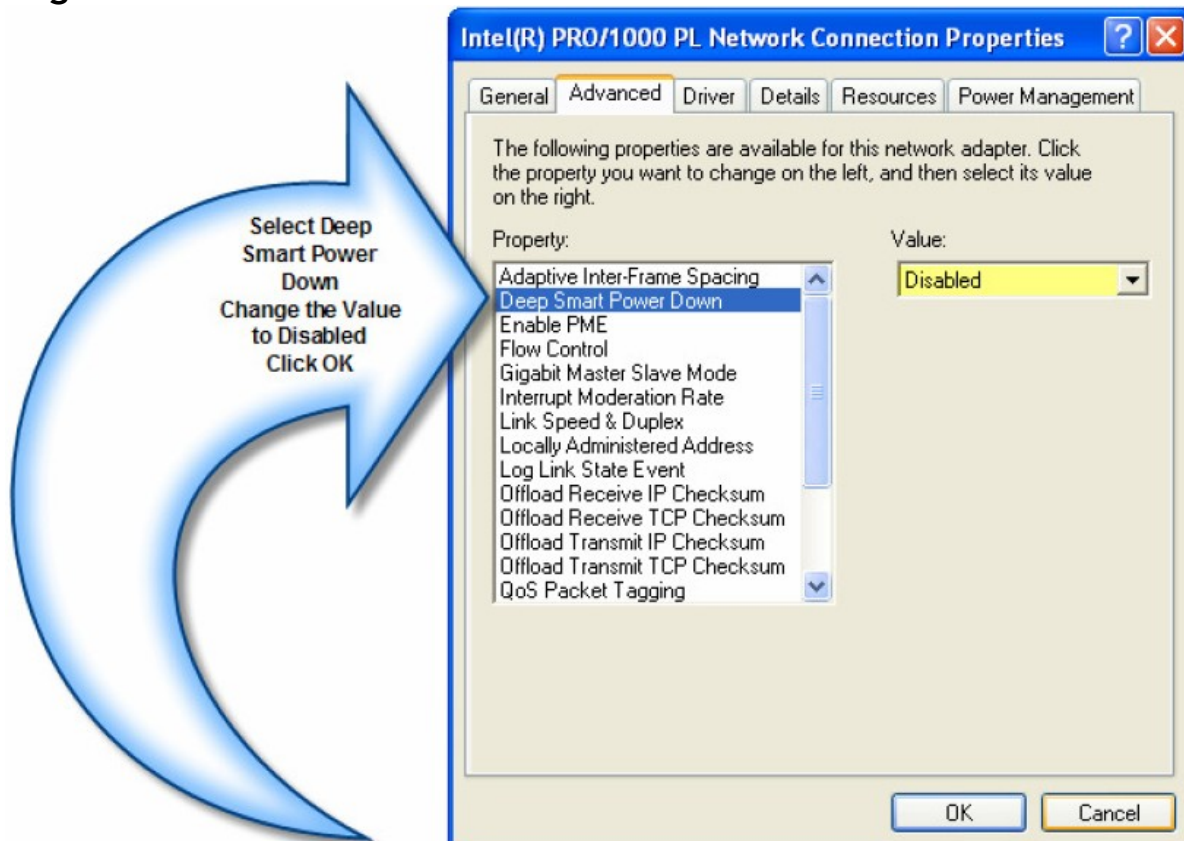


**Step #6** Double Click on Intel(R) PRO/1000 PL Network Connection

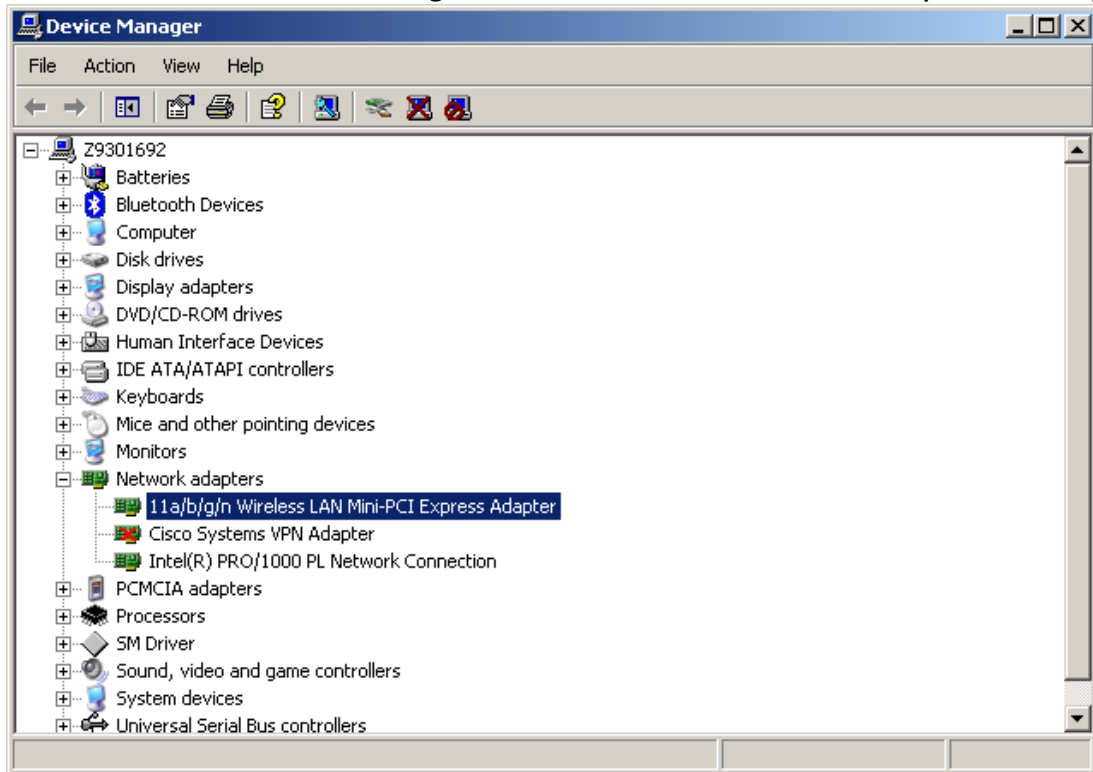


**Step #7** Click on the Advanced Tab

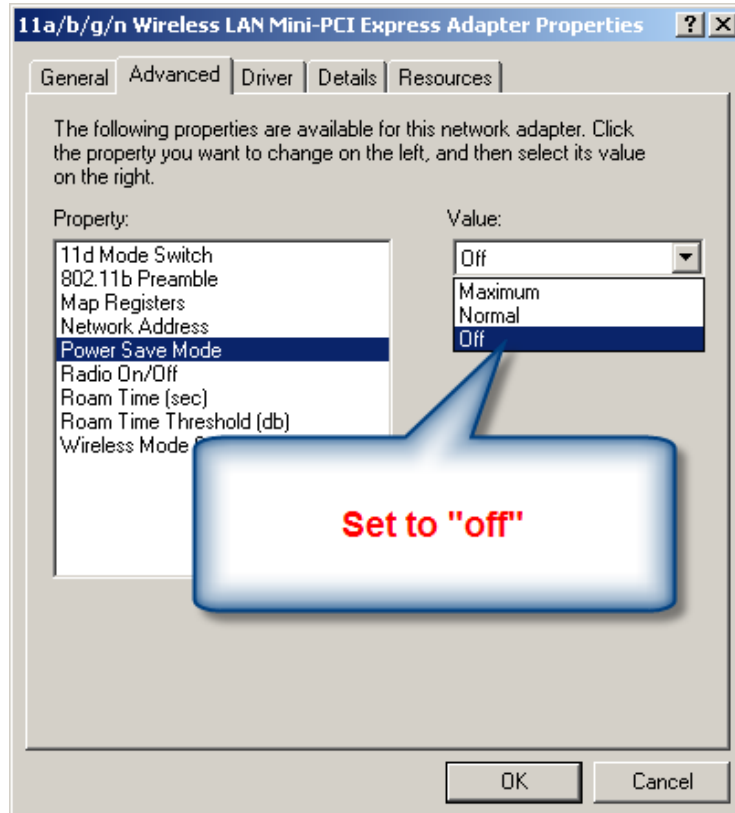
Select Deep Smart Power Down  
Change the Value to Disabled



**Step #8** Double Click on 11a/b/g/n Wireless LAN Mini-PCI Express Adapter



**Step #9** Set Power Save mode on the Advanced tab to "off"



Press OK

**Step #10** Restart your computer to make the settings work

Guide assembled by Jesper Rønn-Jensen 2007-07-25, with screenshots from [http://blog.st-agnes.org/cs/blogs/the\\_cave/attachment/34.ashx](http://blog.st-agnes.org/cs/blogs/the_cave/attachment/34.ashx)

More info: <http://justaddwater.dk/?p=681>

Note that this is only a workaround – the optimal solution is for Lenovo to fix network and wireless drivers so that this will not happen.

More info and suggestions was found in these forums:

- Notebook review forum: T60 wireless problems:  
<http://forum.notebookreview.com/showthread.php?t=78005>
- Edugeek: Laptop wont connect to wireless after standby:  
<http://www.edugeek.net/index.php?name=Forums&file=viewtopic&p=62402>

## Original error report for internal IT department, written 2007-07-24:

**Subject:** Lenovo Wireless not working after standby

Big issue with our lenovo laptops. On my Lenovo T60p (widescreen), i encounter a problem with the wireless network.

**After standby, the computer can't find my wireless network.** It almost will never connect after a system standby.

Only workaround that works is to shut down the computer and restart it (which is completely unacceptable because I can easily loose 10-15 minutes of work when not being able to continue exactly where I was).

Other things I tried but is not working:

- \* Updated wireless drivers. Latest visit at the website was yesterday, so drivers are up-to-date
- \* Log off/ log in again won't help me either
- \* Using the wifi on/off switch on the front of the laptop is useless
- \* The same switch in software (fn + F8) has no effect either
- \* "repair" the wireless connection makes no difference
- \* In the "advanced" tab for the wireless adapter: Setting "power safe mode" to "off" gave no result

Please report this to Lenovo, (i was not able to do so via their website), and let me know if this is a known issue, and when I can expect a solution.

PS. It seems that I'm not the only one having this problem: I talked with the following and they have all experienced the same problem:

xx, xx, xx, xx